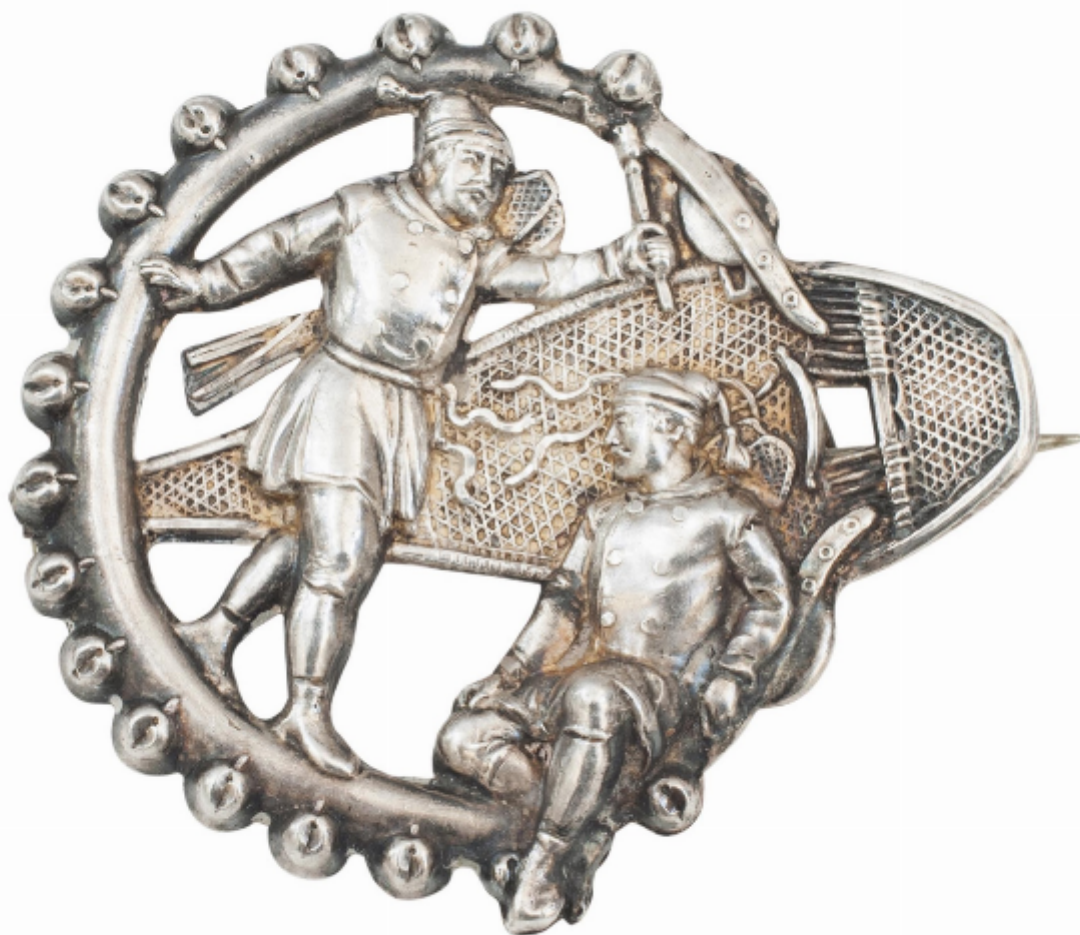


Silver Brooch With Snow Shoes

£125



REF: 29699

Height: 4 cm (1.6")

Width: 4.5 cm (1.8")

Depth: 1 cm (0.4")

Description

Snowshoe Brooch Or Pin.

A very nice piece of antique winter themed jewellery, a broach in the form of a snowshoe with two gentlemen. The surround is in the form of a leather strand with sleigh bells attached to it. The rear has a clasp and is stamped 'Rd 10726'. There are no makers marks but is of very good quality, detailing of the snow shoe and figures is exceptional.